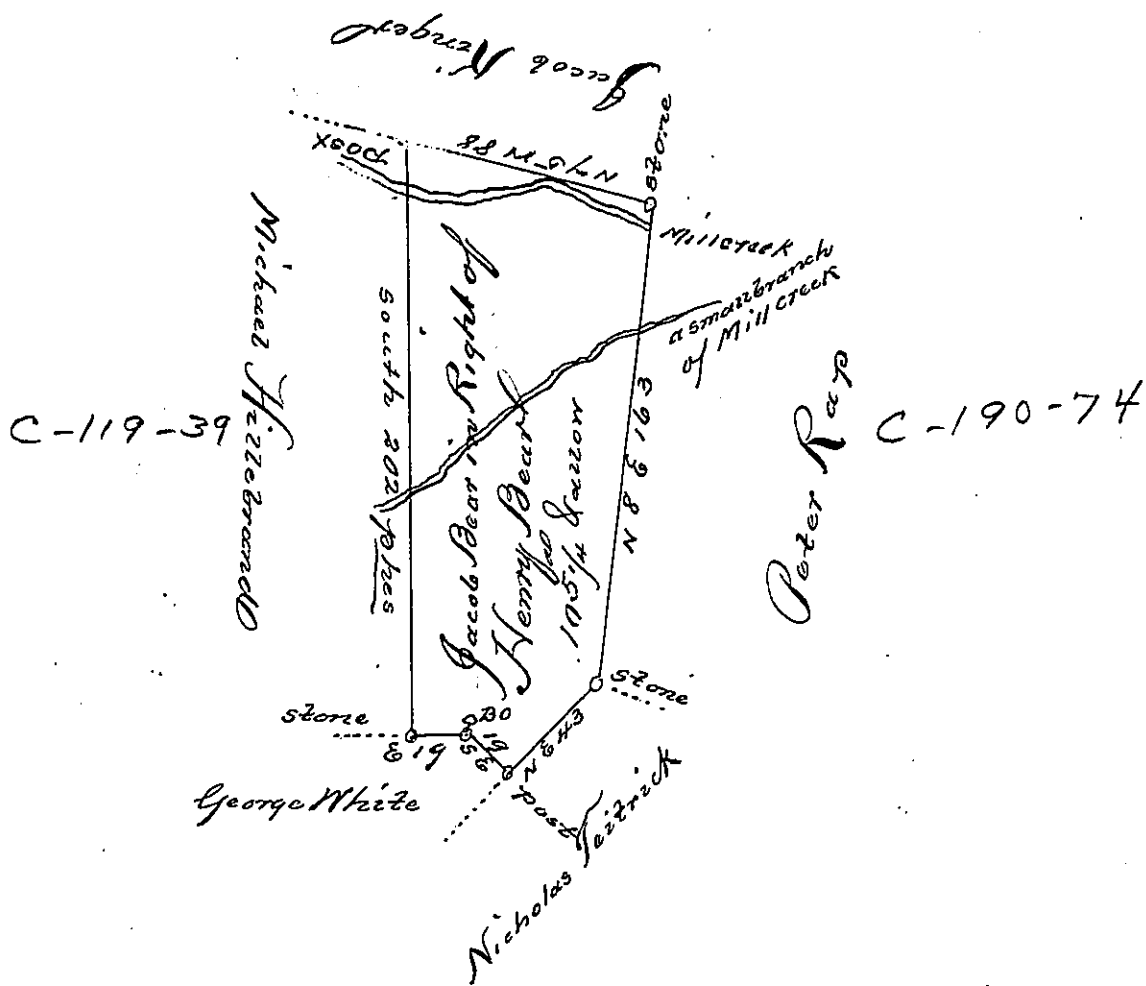


C-107-116



By Virtue of a Warrant from the Proprietaries Bearing Date the 30th Day of August Anno. Dom. 1753. The above Described Tract of Land, Situate on Mill Creek in Erle Township Lancaster County, was formerly surveyed for Henry Bear (as 'tis said) Resurveyed the 19th day of the 12th Mo. 1759. ^{by John Taylor}

IN TESTIMONY that the above is a copy of the original remaining on file in the Department of Internal Affairs of Pennsylvania, made conformably to an Act of Assembly approved the 16th day of February, 1833, I have hereunto set my Hand and caused the Seal of said Department to be affixed at Harrisburg, this third day of June, 1902.

James W. Pitta
Secretary of Internal Affairs.